



1 Grove Cottage Waltham Road, Maidenhead, SL6 3SQ
£960,000 Freehold

Viewings start from the 16th July. CHAIN FREE. A charming four-bedroom semi detached cottage situated on Waltham Road. The property offers well-proportioned accommodation arranged over three floors, including a second-floor bedroom, and benefits from a beautifully maintained private garden.

Located in a desirable village setting, it is within easy reach of Maidenhead town centre and the Elizabeth Line station, as well as nearby schools and a local village pub.

Entrance Porch

Sitting Room

Open fireplace with cast iron surround, stairs to first floor landing

Kitchen

Well fitted with excellent range of base and wall mounted cupboards with drawers, integrated double oven and dishwasher, tiled splashback, central kitchen island unit, slate flooring, stable door leading to rear garden

Dining Room

Family Room

Patio doors to rear garden

Utility Area

Space for washing machine and tall fridge freezer

Cloakroom

WC, wash basin

First Floor Landing

Bedroom 1

Fireplace

Bedroom 2

Double aspect

Bathroom

Enclosed shower cubicle , panelled bath, WC, wash basin

Bedroom 3

Built in wardrobe cupboard

Stairs leading to second floor

Bedroom 4

Eaves storage cupboard

Outside

Large raised paved patio with brick retaining wall and steps down to lawned area with well stocked flower and shrub borders. The front garden leads to a gravelled driveway providing off-road parking

Floor Plan

Approximate Floor Area = 150.7 sq m / 1622 sq ft

Grove Cottages

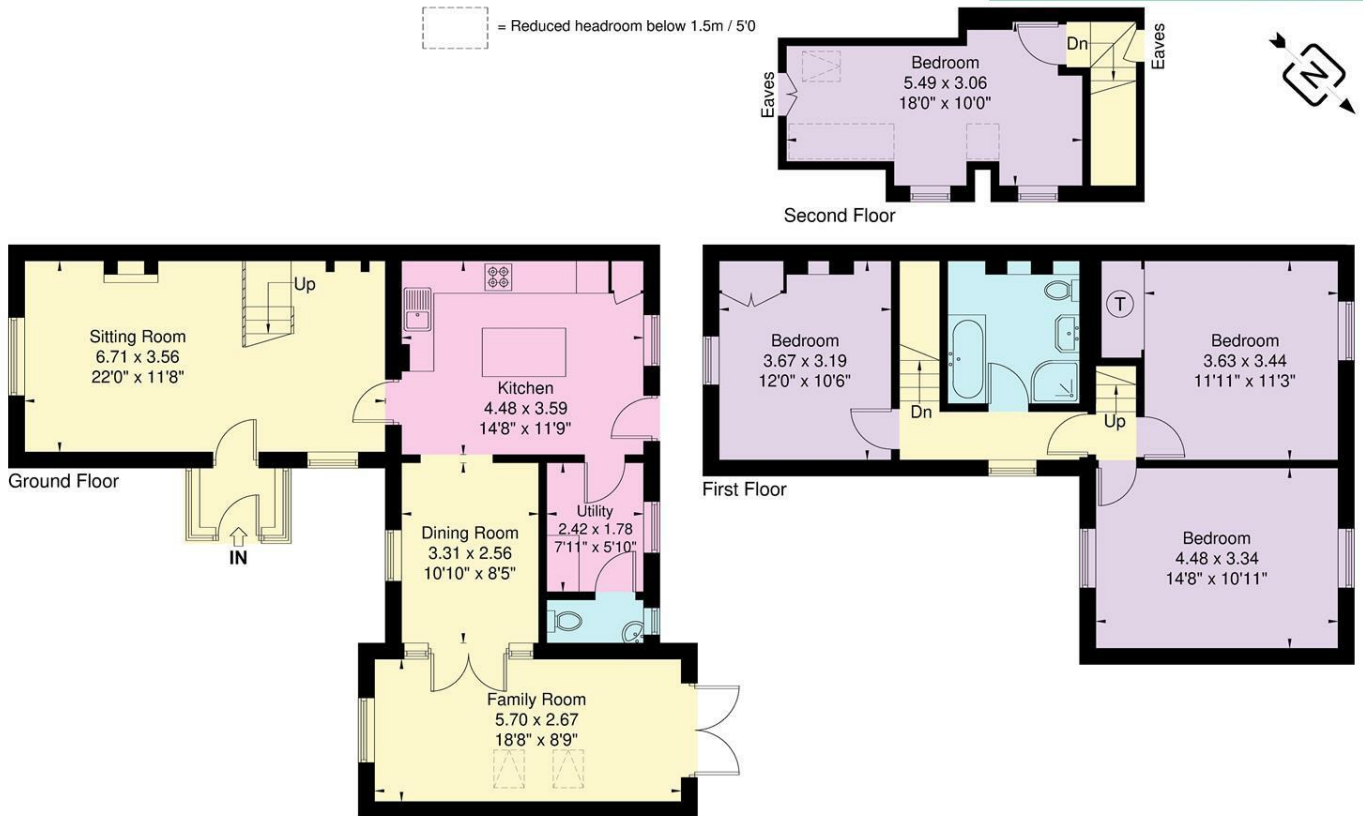
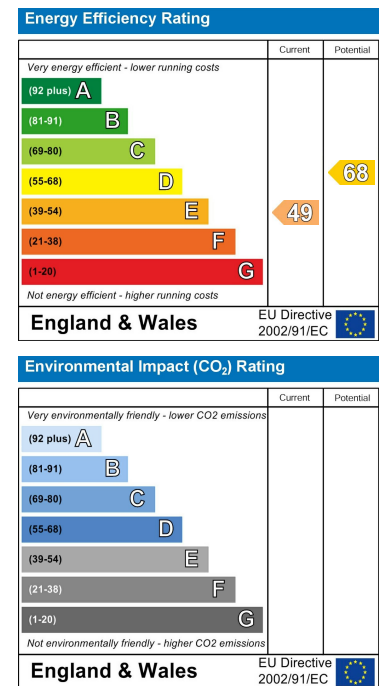


Illustration for identification purposes only, measurements are approximate, not to scale.

Area Map



Energy Efficiency Graph



These particulars, whilst believed to be accurate are set out as a general outline only for guidance and do not constitute any part of an offer or contract. Intending purchasers should not rely on them as statements of representation of fact, but must satisfy themselves by inspection or otherwise as to their accuracy. No person in this firm's employment has the authority to make or give any representation or warranty in respect of the property.